



DEVELOPING LEARNERS FOR LIFE

8TH AUGUST 2025

Waikite Valley School

1090 Waikite Valley Road, RD 1, Rotorua 3077 Tel 021 294 9633

www.waikitevalley.school.nz office@waikitevalley.school.nz

We are: **Confident, Optimistic, Unique, Respectful, Adventurous, have Grit, Enthusiastic**

Kia ora whānau,

Snow Camp

We've had one parent kindly volunteer to help with our Room 4 Snow Camp, but we still need one more for the camp to go ahead.

If we don't have a second helper by Wednesday, we'll unfortunately have to cancel the camp, as we need time to complete police vetting.

Please let the office know ASAP if you are able to help.



Cake Sale

Many thanks to all who supported the Senior Kapahaka bake sake with baking and sending their children with money to buy treats. The cake stall was very successful and we raised enough for our kakahu. We will know the final amount raised next week. Thanks to Lilah, Rachel, Jackson, Ky-mani and Dakota who worked on the stall.

Kind regards

Sheryl Pearson (Cultural Leader)

Notices to be returned :

Snow Camp - years 7 & 8, please return a.s.a.p.
Puberty Permission - years 7 & 8 due 18th August
Pet Day Indication Form - due 1st September



TERM THREE DATES

August

Wed 13 Yr 7 & 8 Technology
C.B.O.P. Winter Sports Day
BOT meeting 6pm
Fri 15 BOP Squash Tournament
Tue 19 Junior Tough Guy & Girl
Wed 20 Yr 7 & 8 Technology
Fri 22 Cultural Festival
Tue 26 WVS Speeches
Mon 25 Yr 7 & 8 puberty talk
Wed 27-29 Yr 7 & 8 Snow Camp
Fri 29 Year 6 Museum trip

September

Mon 1st - Fri 5 AIMS Games
Wed 3 Yr7 & 8 Technology
Tue 9 Reporoa Valley Cluster Speeches Yr5-8
Wed 10 Yr 7 & 8 Technology
Voting Closes for the B.O.T Elections

Thur 11 Student Leaders day
Tues 16 Rip, Grip & Whip
Wed 17 Yr 7 & 8 Technology
BOT Meeting -new board
Thur 18 Jack Te Nahu Speech comp
Fri 19 END OF TERM -Tabloid day

October

Mon 6 TERM 4 BEGINS
Wed 8 Craft Day
Thur 9 Pet Day
Fri 24 Group Day
Mon 27 LABOUR DAY- school closed
Tue 28 MOE Maths Day 2-Teacher only day-school closed

Kind regards

Sue Ratcliffe (Principal)

Please don't hesitate to contact me if you have any questions. principal@waikitevalley.school.nz

PET DAY 2025

Thursday 9th October 2025

ANIMALS MUST BE BORN BETWEEN 20 JULY AND 25 SEPTEMBER

You will have the choice to rear and train a kid, lamb or calf. The Pet Day indication form has been sent home for you to indicate what type of pet you are entering for the day.

If you would like a booklet on rearing a calf, kid or lamb this is also available from the office. Ask your child/ren to come and get one - included in this book are the details for training for each event at Pet Day and some handy hints on competing.



The day before pet day (**Wednesday 8th October**) will be our school craft day where all students will make either a flower craft, play-dough model, painting or other construction to demonstrate their skills. More details to follow. These will be judged after school and displayed on pet day (**Thursday 9th October**).

The calves/lambs/kids that are awarded a place (1st & 2nd) in their ring have the opportunity to represent our school at the Group Day (**Friday 24th October**) hosted by Reporoa Primary School.

Please Return all Pet Day and Speech Competition cups to the Office A.S.A.P.



Waikite Valley School Board of Trustees **Nominees**

We have 6 nominees for the Board of Trustees Election. Please see their candidate statements below.

Voting papers will be sent to those eligible (parents and immediate caregivers) on Monday 11th August. Please let me know if you have not received them.

If you have any questions please contact Kelly Curtis (Returning Officer) at the school office, ph 0211456420 or email office@waikitevalley.school.nz.

**Voting Papers issued by
Election Day**

**Wed 13th August
Wed 10th September**

Samantha Dinning

Kia ora koutou,

My name is Samantha Dinning, and I'm proud to put my name forward for the Board of Trustees at Waikite Valley School.

I've been part of the Waikite Valley community for nearly 20 years, having moved here as a child myself. Now, as a parent of four tamariki: Breeana, Maverick, Jackson, and Bonnie, I feel deeply connected to our school. With a child in each classroom and one more ready to start their journey in a few years, I have a strong interest in supporting the long term success and wellbeing of our kura.

Over the years, I've seen firsthand the positive impact that strong leadership, community involvement, and a caring environment can have on children's learning and confidence. I want to help ensure every child at Waikite Valley School continues to thrive in a space where they feel supported, valued, and challenged to grow.

I'm approachable, practical, and passionate about representing the voices of whānau. I bring a balanced perspective, strong community ties, and a genuine commitment to helping our school continue to be a place we're all proud of. I would be honoured to contribute to the governance of Waikite Valley School and help shape its direction for the future.

Ngā mihi nui,

Samantha Dinning

Board of Trustees Candidate Statement – Ben Klein



Hi, I'm Ben – dad to two girls in Years 2 and 4 at Waikite Valley School. We live locally and run a cabin rental business. I grew up on a dairy farm, so I know the value of hard work, responsibility, and pitching in when it matters.

I'm putting my name forward for the Board because I care about our school and want to help it continue to be a place where all children feel safe, supported, and encouraged to grow. I'm very honest, practical, and a good listener. I believe in open communication, fairness, and working as a team to get things done.

In my spare time, you'll find me water skiing or enjoying the outdoors with my family. I'd be proud to represent our school community and contribute wherever I can.

Vote now!

Voting is now open for school board elections.
Contact your school for more information.

Kelly Curtis- C% 1090 Waikite Valley Road, RD 1
Rotorua 3077 or Office@waikitevalley.school.nz

SCHOOL BOARD ELECTIONS

JESS MITCHELL

CANDIDATE STATEMENT; WAIKITE VALLEY SCHOOL BOARD OF TRUSTEES

Kia ora koutou. I'm Jess, a local parent, education advocate, and Strategic Director of Designally.

Our whānau live here in Waikite Valley, with our nearly 7-year-old at Waikite Valley School and our 4-year-old starting next year. I'm personally invested in helping our school thrive – not just for our tamariki now, but as caretakers for future generations too.

Professionally, I bring experience as a secondary teacher, design strategist, and education-focused innovator/industrial designer. I've worked on projects improving learning environments, supporting inclusive education, and tackling issues like posture, myopia, digital overuse, and food poverty in schools. I've also contributed to national policy work improving conditions for learners.

From leading student exhibitions with Weta Workshop to running Silver Duke of Ed to shaping classroom tools used across Aotearoa, I've seen the power of purposeful mindsets and strong leadership in education.

I believe good boards listen, reflect, and lead with integrity. I'd be honoured to support our school's continued success through a lens of strategic thinking, innovation, care, and community.

Ngā mihi,
Jess Mitchell



QUALIFICATIONS

Bachelor of Design with Honours
(BDes (Hons)), Industrial.
Massey University New Zealand

Post Graduate Diploma Teaching Secondary
(GDipTchg(Secondary)). Massey University New Zealand

Certificate of Human-
Centered Service Design.
IDEO U

Design Kit: The Course For Human-Centered Design
IDEO U

ONLINE

LinkedIn Profile: <https://www.linkedin.com/in/findjessmitchell>

Portfolio Website: findjess.com

Designally Website: designally.nz

Designally Instagram: @designallynz

ACCOLADES

Best Awards Industrial (Product) Judge 2025

Best Awards Winner 2018 Product: Bronze

Emerging Business Leader Finalist 2025

(Tompkins Wake Rotorua Business Awards)

Excellence Category Finalist Professional Services 2023

(Tompkins Wake Rotorua Business Awards)

Karl Sluiters

Hello, my name is Karl Sluiters, and I am seeking a position on the Waikite Valley School Board of Trustees. As a father of two daughters, my youngest attends Waikite Valley School, I'm personally invested in our school's future.

I believe our school is the heart of our rural community, and I am committed to contributing to its ongoing success. My background in sales has equipped me with strong communication and collaboration skills, which I believe are essential for a trustee. My work is centered on listening to people, understanding their needs, and working together to find effective solutions. I'm skilled at building trust and fostering positive relationships, and I am confident these skills would be a valuable asset to the board.

If elected, I will be an approachable and dedicated voice for our parents, teachers, and students. I will ensure your ideas are heard and work collaboratively with fellow trustees to make well-informed decisions. My goal is to help create a safe, challenging, and inspiring environment where all our children can thrive. I am committed to being honest, enthusiastic, and always focused on what is best for our kids

Kind regards

Karl Sluiters



Denise Temata

Hi there,

My name is Denise Temata.

I am currently on the board as a parent representative and would like to continue this role should I be elected.

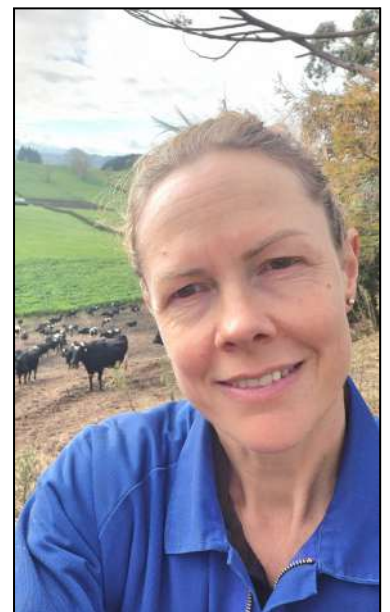
I grew up in Waikite Valley and spent my primary/intermediate years here at Waikite Valley School. My two children, Jacob and Kayla are now also enrolled here, hence I have a strong connection and commitment to ensuring our policies are current and meeting our needs.

We have a great school and community and I will do my best to continue its success for the benefit of all our children. I love to see all children thriving and succeeding in life.

I look forward to the many challenges and achievements the future brings.

Thank you for your time and consideration.

Denise Temata



Hi, I'm Kate – a Waikite Valley resident, parent of four, and local farmer.

I'm really passionate about education and the difference it can make in a child's life. As a primary school teacher, I've seen firsthand how important it is for kids to feel supported, safe, and confident in their learning environment. Every child deserves a positive start to their education, and I want to help ensure our school provides just that – a place where they are encouraged, challenged, and inspired to reach their full potential.

I have a Marketing degree that's given me strong communication, planning, and teamwork skills—key for working well with teachers, parents, and the community to make good decisions for the school and its students.

My own children are involved in both the school and kindy, so I'm deeply connected to the community and invested in its future. Supporting our local community is very important to me, and I'm committed to contributing my time and energy to ensure the school continues to thrive.

When I'm not chasing after my four busy kids, I enjoy spending time outdoors with my family. We often go on bike rides together, and I also love going for a run. On the farm, I help with the animals and manage the administration side of things, which keeps me busy and engaged with different aspects of rural life.

If I'm elected as a trustee, I will bring enthusiasm, a listening ear, and a strong commitment to making our school the best it can be. I believe in fostering strong, positive relationships with teachers, parents, and students, and in working together to create a learning environment where every child feels valued and supported.

I want Waikite Valley School to be a place where kids feel safe, excited to learn, and proud to be part of their school community.

Thanks for considering me.

Ngā mihi,

Kate Waterworth





Rotorua Boys' High School

Tumuaki/Principal: J. KENDAL, BTchg, DipTchg

20th July 2025

You are invited to Open Day at Rotorua Boys' High School

Dear Parent/Caregiver

Your son is invited to take part in an open day at Rotorua Boys' High School offering him the opportunity to see the special features of our busy and exciting school.

This Open Day will be on **Thursday 14th of August 2025**. During the day your son will be involved in workshops and various activities that will provide an insight into what life at Rotorua Boys' High School will be like.

The programme will begin at 9.00am and conclude at 2.30pm. On arrival our Year 9 Leaders will be there to guide your son to our venue for the day. A healthy lunch and morning tea will be provided in our Dining Room but if your son has special dietary requirements he should bring his own lunch.

We look forward to welcoming your son to our School and our Open Day. Please see our Facebook page for more information on our upcoming Enrolment Events. Our Open Evening, which whanau are welcome to attend, is Tuesday the 29th of July at 4.30pm.

Yours sincerely

Mrs A Hay and Mr J Te Huia
Deans of Year 9

deanyear9@rbhs.school.nz

(07) 3486169 ext 229.

IMPORTANT DATES FOR 2026 ENROLMENTS

29 JULY	13 AUG	14 AUG	05 NOV
Open Evening	Open Day 1 <small>(MIS ONLY)</small>	Open Day 2 <small>(CONTRIBUTING SCHOOLS)</small>	Orientation Day

www.rbhs.school.nz | deanyear9@rbhs.school.nz | Rotorua Boys' High School | @rotuaboyshighschool

DRY DOUGLAS FIR

FIREWOOD



GET YOUR ORDERS IN NOW FOR NEXT YEAR

\$100 / CUBE DELIVERED

CALL / TXT DENISE 021 0271 2476

**ALL PROCEEDS GOING TOWARDS OUR NEW
PLAYGROUND AT WAIKITE VALLEY SCHOOL**

Stay Optimistic

Term 3 , Week 4 Values Assembly

RESPECT OTHERS



Pod 1 - Jorga Roche & Grayson Sowman Rm 2- Charlotte Lischner & Saskia Barclay Rm 3- Clarence Delina & Harper Klein



Aims Games 2025 Contestants

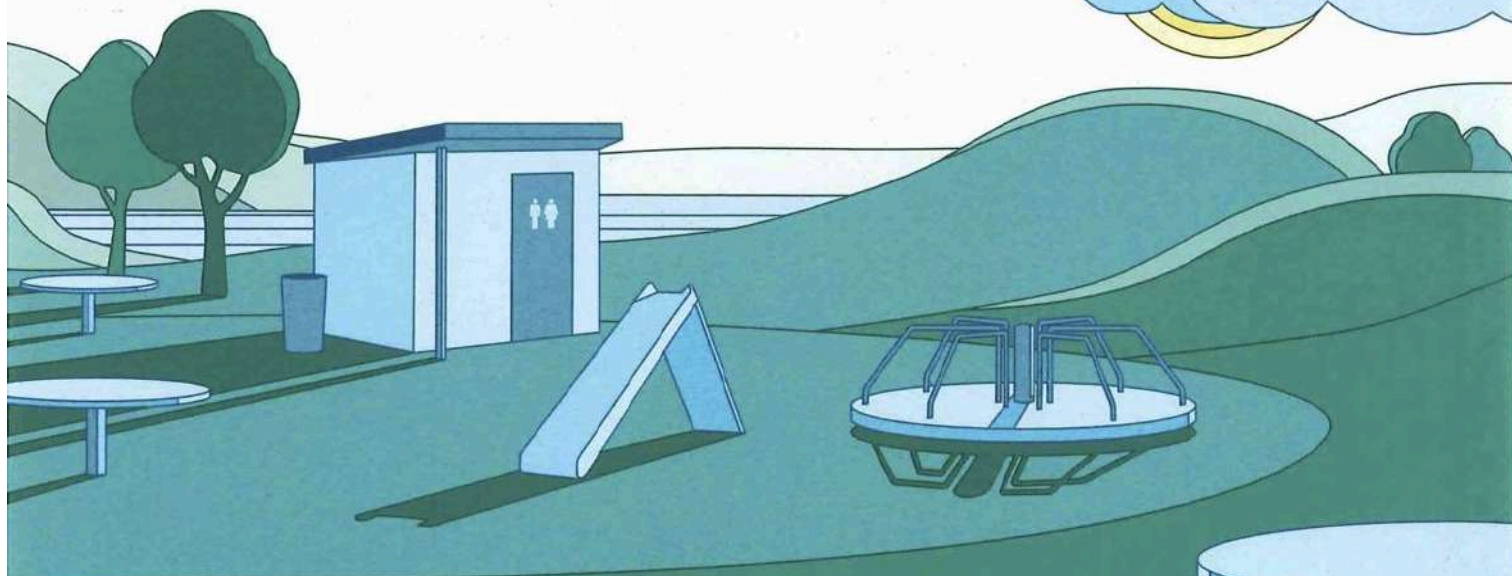
Rm 4 - Taiju Hase & Indigo La Grouw



Player of the Day

Principal's Award Harlo Burns & Bailey Holmes

IDEAS OPEN FOR RURAL COMMUNITY FUNDING!



THE ROTORUA RURAL COMMUNITY BOARD HAS FUNDING AVAILABLE TO IMPROVE PUBLIC FACILITIES IN RURAL AREAS.

Got an idea about something that could benefit your community? It needs to be ...

- ▶ In a rural area within the Rotorua District
- ▶ Free and open to all members of the community
- ▶ Improving a council-owned asset (eg reserve, playground, council building, local road)

Anyone from our local rural communities can put forward ideas about how the funding could be spent. Submission for ideas is open from 4 July – 4 August 2025.



Visit rotorualakescouncil.nz/FundingIdeas to submit your ideas or for more information.

Any questions? Email RLC.Governance@rotorualc.nz

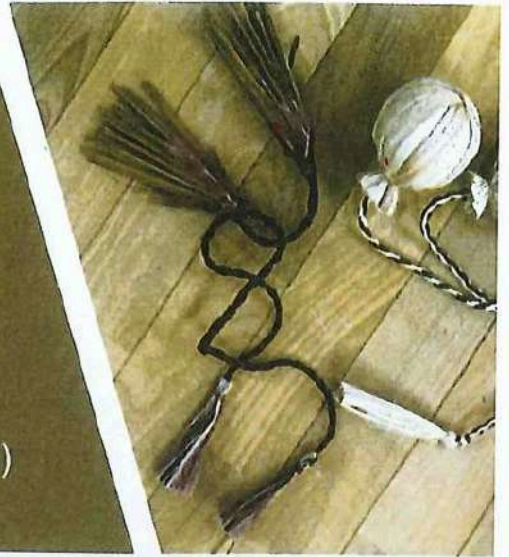
**ROTORUA
LAKES COUNCIL**
Te Kaunhara o ngā Roto o Rotorua

REPOROA

Beginners Te Reo Māori

with Grant Hohepa

Date: Tuesdays from 29 July (8 weeks)
Time: 5.00pm - 7.00pm
Venue: Reporoa College Whare
Cost: FREE for all 8 lessons
Age: 16+ (under 16s welcome with whanau)



Join us and learn:

- Correct pronunciation
- Waiata, Pepeha, Karakia, Tikanga
- Basic Sentence structure and more...

*“Whaowhia te kete o mātauranga”
Fill the basket of knowledge*

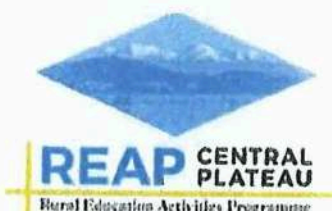
Come and Have a Go!

Nau mai Haere mai!

Experience a friendly and engaging tutor in a relaxed environment



SCAN HERE



Phone: 07 378 8109

Email:

ako@reapcentralplateau.nz

Website:

www.reapcentralplateau.nz



PLEASE SUPPORT THE BUSINESSES THAT SUPPORT US



GR8VANS
BUILDING LTD
PH 027 630 8245



REAP CENTRAL PLATE
ral Education Activities Program



CENTRAL DRAINAGE & EARTHWORKS
Watson Elliston
Registered Drainlayer
MOBILE 021 938 956
EMAIL watson@centraldrainage.co.nz

DRAINAGE
Residential/Subdivisional
Septic & Bio Cycle Tanks

EARTHWORKS
All farm work:
- Races & Driveways
- Site Excavation
- Effluent Ponds
- Tree Removal
2.5 and 12 TON DIGGERS



BLUFF COUNTRY
CONTRACTORS

RICOH
imagine. change.



WAIKITE VALLEY
THERMAL POOLS
Springs'n'Spa



CAROLYN MORRIS
M +64 21 292 2891
carolyn.morris@nzsir.com
New Zealand | Sotheby's INTERNATIONAL REALTY



FARM SOURCE
Fonterra
Dairy for life

RDO FENCING
FOR ALL YOUR FENCING NEEDS



PH 027 229 4656



SILVER FERN FARMS
100% MADE OF NEW ZEALAND

grassroots trust NZCT
NZ COMMUNITY TRUST



Woolworths



Farmlands



Shane Atkinson BUILDERS
COMMERCIAL and RESIDENTIAL
021 222 9999
sa.builders@outlook.com

ASB
ONE STEP > AHEAD



ANIMAL HEALTH SERVICES