



DEVELOPING LEARNERS FOR LIFE

1 AUGUST 2025

# Waikite Valley School

1090 Waikite Valley Road, RD 1, Rotorua 3077 Tel 021 294 9633

[www.waikitevalley.school.nz](http://www.waikitevalley.school.nz) [office@waikitevalley.school.nz](mailto:office@waikitevalley.school.nz)

*We are: Confident, Optimistic, Unique, Respectful, Adventurous, have Grit, Enthusiastic*

Kia ora whānau, **URGENT !! Nominations close (12pm) Wed 6th August**

**NO NOMINATIONS WILL BE ACCEPTED AFTER 12PM!!**

**Call for Nominations: Board of Trustees (BOT) - Waikite Valley School**

## Want to learn more?

Please have a chat with any of our current BOT members: Mike France, Mary Briggs, Kelly Weston, Denise Temata, Lisa Dinning, Sophia Burton or myself. We are all very happy to answer any questions. More details follow below in this newsletter.

## TERM THREE DATES

### August

Wed 6 Yr 7 & 8 Technology  
**B.O.T. Nominations close**  
Wed 13 Yr 7 & 8 Technology  
C.B.O.P. Winter Sports Day  
BOT meeting 6pm  
Fri 15 BOP Squash Tournament  
Tue 19 Junior Tough Guy & Girl  
Wed 20 Yr 7 & 8 Technology  
Fri 22 Cultural Festival  
Tue 26 WVS Speeches  
Mon 25 Yr 7 & 8 puberty talk  
Wed 27-29 Yr 7 & 8 Snow Camp  
Fri 29 Year 6 Museum trip

### September

Mon 1st - Fri 5 AIMS Games  
Wed 3 Yr 7 & 8 Technology  
Tue 9 Reporoa Valley Cluster Speeches Yr 5-8  
Wed 10 Yr 7 & 8 Technology  
**Voting Closes for the B.O.T Elections**

Thur 11 Student Leaders day  
Tues 16 Rip, Grip & Whip  
Wed 17 Yr 7 & 8 Technology  
BOT Meeting -new board  
Thur 18 Jack Te Nahu Speech comp  
Fri 19 END OF TERM -Tabloid day

### October

Mon 6 TERM 4 BEGINS  
Wed 8 Craft Day  
Thur 9 Pet Day  
Fri 24 Group Day  
Mon 27 **LABOUR DAY- school closed**  
Tue 28 **MŌE Maths Day 2-Teacher only day-school closed**

Kind regards

Sue Ratcliffe (Principal)

Please don't hesitate to contact me if you have any questions. [principal@waikitevalley.school.nz](mailto:principal@waikitevalley.school.nz)





## Notices to be returned :

Snow Camp - years 7 & 8, **please return a.s.a.p.**

C.B.O.P. Winter Sports day - years 3,4,5,& 6 **due Friday 1st August**

B.O.P. Inter - School Squash Tournament - Years 5,6,7 & 8 **due 6th August**

Puberty Permission - years 7 & 8 **due 18th August**

Pet Day Indication Form - **due 1st September**



## Waikite Valley Minis

The Waikite Valley Minis are having an impressive season-currently undefeated and recently promoted up a grade mid-season!! With players ranging from Year 2 to Year 4, this hardworking team is displaying plenty of grit and enthusiasm. Well Done, Minis!!

From Kelly Weston and Joe McNaul





## Junior Tough Guy & Girl Challenge

Tues 19th August.

Please enter on line at

<https://eventplus.net/app/registration/summary>





# PET DAY 2025

Thursday 9th October 2025

**ANIMALS MUST BE BORN BETWEEN 20 JULY AND 25 SEPTEMBER**

You will have the choice to rear and train a kid, lamb or calf. The Pet Day indication form has been sent home for you to indicate what type of pet you are entering for the day.

If you would like a booklet on rearing a calf, kid or lamb this is also available from the office. Ask your child/ren to come and get one - included in this book are the details for training for each event at Pet Day and some handy hints on competing.



The day before pet day (**Wednesday 8th October**) will be our school craft day where all students will make either a flower craft, play-dough model, painting or other construction to demonstrate their skills. More details to follow. These will be judged after school and displayed on pet day (**Thursday 9th October**).

The calves/lambs/kids that are awarded a place (1st & 2nd) in their ring have the opportunity to represent our school at the Group Day (**Friday 24th October**) hosted by Reporoa Primary School.

*Please Return all Pet Day and Speech Competition cups to the Office A.S.A.P.*





## PTA Fundraising

### Yarrows Fundraiser - Playground Support

Remember to get your orders in. If you need any more forms please pick one up at the office.

Thank you for your support, from the PTA

<b>CLOSING DATE: Monday 4th August</b> <b>ONE PAYMENT PER FAMILY PLEASE</b> <b>PAY INTO PTA ACC: 12-3155-0164206-00</b>											
		<b>Yarrows &amp; Loaf</b> <b>Cookies, Croissants and Mini Bites Fundraising Order Form</b>									
<i>Bake At Home Cookie, Croissants and Mini Bites</i>											
Contact Name											
Contact Number											
Name	Anzac	M & M	White Chocolat e Macada mia	Chocolat e Chip	Croissant s	Sticky Chocolat e Brownie	Gooey Caramel Slice	Rocky Road	Lolly	Apricot & Blueberry	Total
	20 cookies per pouch	20 cookies per pouch	20 cookies per pouch	20 cookies per pouch	15 Croissant s per pouch	6 bites per Pouch	6 bites per Pouch	6 bites per Pouch	6 bites per Pouch	6 bites per Pouch	
	\$12.00	\$12.00	\$12.00	\$12.00	\$13.00	\$4.50	\$4.50	\$4.50	\$4.50	\$4.50	





# Rotorua Boys' High School

Tumuaki/Principal: J. KENDAL, BTchg, DipTchg

20th July 2025

## ***You are invited to Open Day at Rotorua Boys' High School***

Dear Parent/Caregiver

Your son is invited to take part in an open day at Rotorua Boys' High School offering him the opportunity to see the special features of our busy and exciting school.

This Open Day will be on **Thursday 14th of August 2025**. During the day your son will be involved in workshops and various activities that will provide an insight into what life at Rotorua Boys' High School will be like.

The programme will begin at 9.00am and conclude at 2.30pm. On arrival our Year 9 Leaders will be there to guide your son to our venue for the day. A healthy lunch and morning tea will be provided in our Dining Room but if your son has special dietary requirements he should bring his own lunch.

We look forward to welcoming your son to our School and our Open Day. Please see our Facebook page for more information on our upcoming Enrolment Events. Our Open Evening, which whanau are welcome to attend, is Tuesday the 29th of July at 4.30pm.

Yours sincerely

**Mrs A Hay and Mr J Te Huia**  
**Deans of Year 9**

[deanyear9@rbhs.school.nz](mailto:deanyear9@rbhs.school.nz)

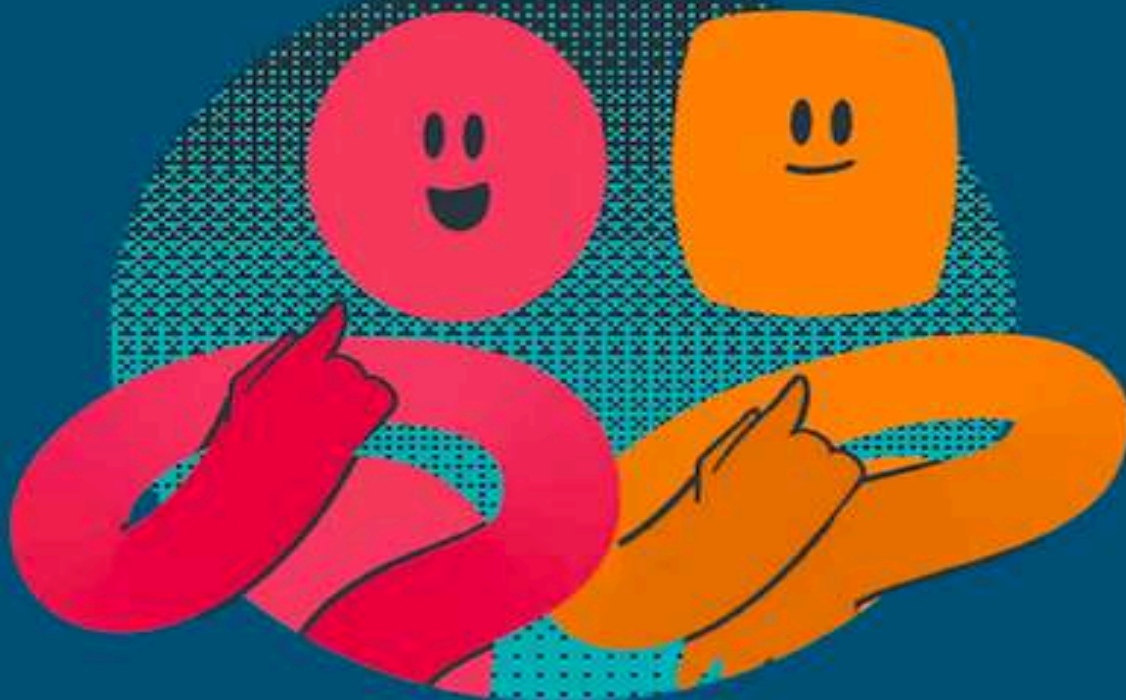
(07) 3486169 ext 229.

**IMPORTANT DATES FOR 2026 ENROLMENTS**

29 JULY	13 AUG	14 AUG	05 NOV
Open Evening	Open Day 1 <small>(WEB ONLY)</small>	Open Day 2 <small>(CONTRIBUTING SCHOOLS)</small>	Orientation Day

[www.rbhs.school.nz](http://www.rbhs.school.nz) [deanyear9@rbhs.school.nz](mailto:deanyear9@rbhs.school.nz) [Rotorua Boys' High School](https://www.facebook.com/RotoruaBoysHighSchool) [@rotoruaoyshighschool](https://www.instagram.com/rotoruaoyshighschool)

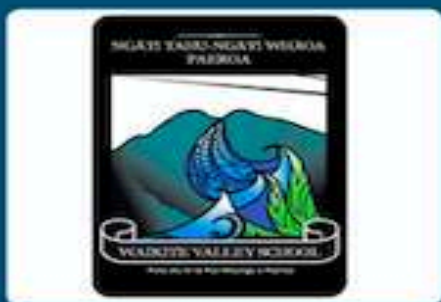




# Get on board!

Nominate yourself or someone you know  
to be a school board member.

Kelly Curtis- C% 1090 Waikite Valley Road, RD 1  
Rotorua 3077 or [Office@waikitevalley.school.nz](mailto:Office@waikitevalley.school.nz)



  
SCHOOL BOARD  
ELECTIONS

Waikite Valley School Board of Trustees election will be run this term . Five parent representatives are required. The Electoral role is available at the school office and nomination forms will be emailed to parents/caregivers on Friday 18th July. Forms are also available from the school office. If you have any questions please contact Kelly Curtis (Returning Officer) at the school office, ph 0211456420 or email [office@waikitevalley.school.nz](mailto:office@waikitevalley.school.nz).

**Key Dates:**  
**Nomination forms available**  
**Nominations close (12pm)**  
**Election Day**

**Fri 18th July**  
**Wed 6th August**  
**Wed 10th September**

**DRY DOUGLAS FIR**

# **FIREWOOD**



**GET YOUR ORDERS IN NOW FOR NEXT YEAR**

**\$100 / CUBE DELIVERED**

CALL / TXT DENISE 021 0271 2476

**ALL PROCEEDS GOING TOWARDS OUR NEW  
PLAYGROUND AT WAIKITE VALLEY SCHOOL**





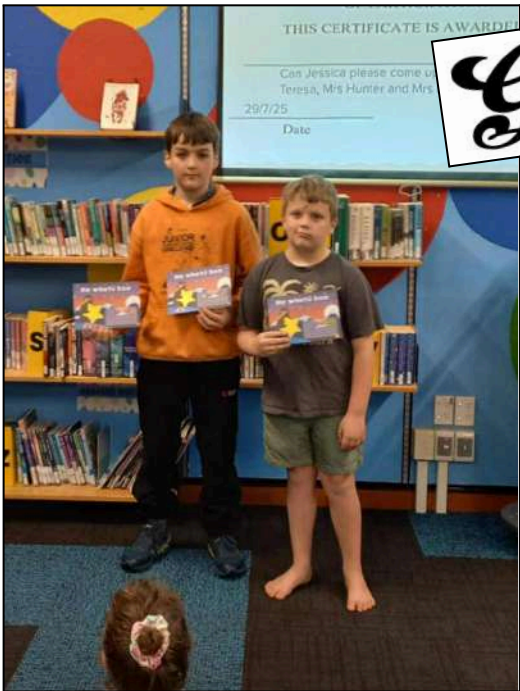
Term 3 , Week 3 Values Assembly



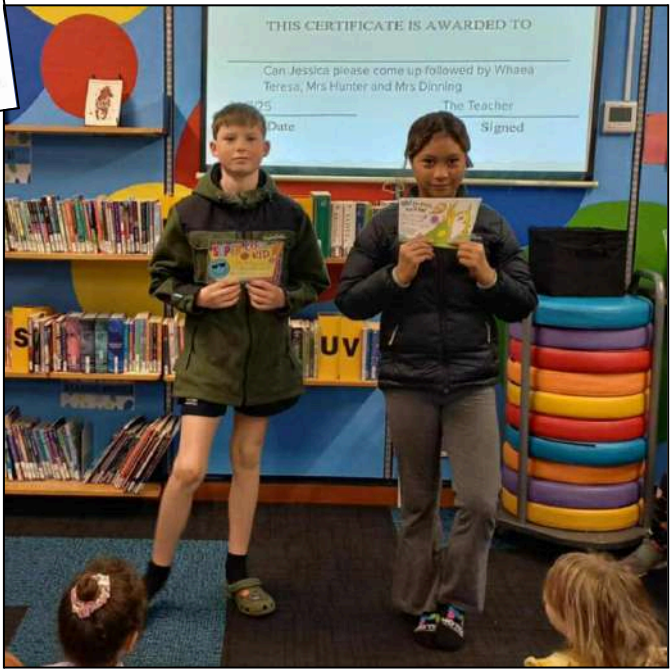
Pod 1 - Jorga Roche & Grayson Sowman



Rm 2 - Rangi Wiremu, Henry Atkinson & Eli Gielen



Rm 3 - Campbell Briggs & Hugh Van Twuiver



Rm 4 - Blake Braithwaite & Ahu Whare - Collier





# IDEAS OPEN FOR RURAL COMMUNITY FUNDING!



**THE ROTORUA RURAL COMMUNITY BOARD HAS FUNDING  
AVAILABLE TO IMPROVE PUBLIC FACILITIES IN RURAL AREAS.**

**Got an idea about something that could benefit  
your community? It needs to be ...**

- ▶ In a rural area within the Rotorua District
- ▶ Free and open to all members of the community
- ▶ Improving a council-owned asset (eg reserve, playground, council building, local road)

Anyone from our local rural communities can put forward ideas about how the funding could be spent. Submission for ideas is open from 4 July – 4 August 2025.



Visit [rotorualakescouncil.nz/FundingIdeas](https://rotorualakescouncil.nz/FundingIdeas) to submit your ideas or for more information.

Any questions? Email [RLC.Governance@rotorualc.nz](mailto:RLC.Governance@rotorualc.nz)

**ROTORUA  
LAKES COUNCIL**  
Te Kaitiaki o ngā Roto o Rotorua



# REPOROA

## Beginners Te Reo Māori

*with Grant Hohepa*

**Date:** Tuesdays from 29 July (8 weeks)  
**Time:** 5.00pm - 7.00pm  
**Venue:** Reporoa College Whare  
**Cost:** FREE for all 8 lessons  
**Age:** 16+ (under 16s welcome with whanau )



## Join us and learn:

- Correct pronunciation
- Waiata, Pepeha, Karakia, Tikanga
- Basic Sentence structure and more...

*"Whaowhia te kete o mātauranga"*  
*Fill the basket of knowledge*



## Come and Have a Go!

## Nau mai Haere mai!

Experience a friendly and engaging tutor in a relaxed environment



SCAN HERE



**Phone:** 07 378 8109

**Email:**

**ako@reapcentralplateau.nz**

**Website:**

**www.reapcentralplateau.nz**





PLEASE SUPPORT THE BUSINESSES THAT SUPPORT US



**RICOH**  
imagine. change.



PH 027 229 4656



100% MADE OF NEW ZEALAND

