



DEVELOPING LEARNERS FOR LIFE

JULY 25 2025

# Waikite Valley School

1090 Waikite Valley Road, RD 1, Rotorua 3077 Tel 021 294 9633

[www.waikitevalley.school.nz](http://www.waikitevalley.school.nz) [office@waikitevalley.school.nz](mailto:office@waikitevalley.school.nz)

*We are: Confident, Optimistic, Unique, Respectful, Adventurous, have Grit, Enthusiastic*

Kia ora whānau,

## Call for Nominations: Board of Trustees (BOT) - Waikite Valley School

Waikite Valley School is now accepting nominations for the Board of Trustees. We're looking for individuals who value community, understand the unique strengths and challenges of rural education, and are committed to supporting our tamariki in a nurturing, inclusive environment.

### Want to learn more?

Please have a chat with any of our current BOT members: Mike France, Mary Briggs, Kelly Weston, Denise Temata, Lisa Dinning, Sophia Burton or myself. We are all very happy to answer any questions. More details follow below in this newsletter.

## TERM 2 ATTENDANCE

	Student Categories	Student with	Equivalent to
	Regular attendance	over 90% attendance	missing fewer than 5 days across a term
	Irregular absence	more than 80% and up to 90% attendance	absent for between 5 and 9 days across a term
	Moderate absence	more than 70% and up to 80% attendance	absent for between 10 and 14.5 days across a term
	Chronic absence	70% attendance or less	absent for 15 days or more across a school term

Regular Attendance 62%

Irregular Absence 30%

Moderate Absence 5%

Chronic Absence 3%

81% of students were on time to class.

Kind regards

Sue Ratcliffe (Principal)

Please don't hesitate to contact me if you have any questions. [principal@waikitevalley.school.nz](mailto:principal@waikitevalley.school.nz)

## Notices to be returned :

Snow Camp - years 7 & 8, please return a.s.a.p.

C.B.O.P. Winter Sports day - years 3,4,5,& 6 due Friday 1st August

B.O.P. Inter - School Squash Tournament - Years 5,6,7 & 8 due 6th August

Puberty Permission - years 7 & 8 due 18th August



## TERM THREE DATES

### July

Fri 18th **Nominations open for the B.O.T. Election**  
 Wed 23rd 7 & 8 Technology  
 Wed 30th 7 & 8 Technology

### August

Wed 6th 7 & 8 Technology  
**B.O.T. Nominations close**  
 Wed 13th 7 & 8 Technology  
 C.B.O.P. Winter Sports Day  
 B.O.T. meeting 6pm  
 Fri 15th BOP Squash Tournament

Tues 19th Junior Tough Guy & Girl  
 Wed 20th 7 & 8 Technology  
 Tues 26th WVS Speeches  
 Wed 27th - 29th 7 & 8 Snow Camp

### September



Mon 1st - Fri 5th AIMS Games  
 Wed 3rd 7 & 8 Technology  
 Wed 10th 7 & 8 Technology  
**Voting Closes for the B.O.T Elections**  
 Tues 16th Rip, Grip & Whip  
 Wed 17th 7 & 8 Technology  
 BOT Meeting  
 Fri 22nd MultiCultural Festival

## PTA Fundraising

### Yarrows Fundraiser - Playground Support

Remember to get your orders in. If you need any more forms please pick one up at the office.

Thank you for your support, from the PTA

<b>CLOSING DATE: Monday 4th August</b> <b>ONE PAYMENT PER FAMILY PLEASE</b> <b>PAY INTO PTA ACC: 12-3155-0164206-00</b>											
		<b>Yarrows &amp; Loaf</b> <b>Cookies, Croissants and Mini Bites Fundraising Order Form</b> <i>Bake At Home Cookie, Croissants and Mini Bites</i>									
<b>Contact Name</b>											
<b>Contact Number</b>											
Name	Anzac	M & M	White Chocolat e Macada mia	Chocolat e Chip	Croissant s	Sticky Chocolat e Brownie	Gooey Caramel Slice	Rocky Road	Lolly	Apricot & Blueberry	Total
	20 cookies per pouch	20 cookies per pouch	20 cookies per pouch	20 cookies per pouch	15 Croissant s per pouch	6 bites per Pouch	6 bites per Pouch	6 bites per Pouch	6 bites per Pouch	6 bites per Pouch	
	\$12.00	\$12.00	\$12.00	\$12.00	\$13.00	\$4.50	\$4.50	\$4.50	\$4.50	\$4.50	



# FUNDRAISING

PLAYGROUND

PROJECT

\$180,000

\$90,000

\$85,000

\$80,000

\$30,000

Kapenga  
Sharing

PTA QUIZ NIGHT



# Junior Tough Guy & Girl Challenge

Tues 19th August.



Please enter on line at

<https://eventplus.net/app/registration/summary>

## PET DAY 2025

Thursday 9th October 2025

**ANIMALS MUST BE BORN BETWEEN 20 JULY AND 25 SEPTEMBER**

You will have the choice to rear and train a kid, lamb or calf. In the next couple of weeks, a form will come home for you to indicate what type of pet you are entering for the day.

If you would like a booklet on rearing a calf, kid or lamb this is also available from the office. Ask your child/ren to come and get one - included in this book are the details for training for each event at Pet Day and some handy hints on competing.



The day before pet day (**Wednesday 8th October**) will be our school craft day where all students will make either a flower craft, play-dough model, painting or other construction to demonstrate their skills. More details to follow. These will be judged after school and displayed on pet day (**Thursday 9th October**).

The calves/lambs/kids that are awarded a place (1st & 2nd) in their ring have the opportunity to represent our school at the Group Day (**Friday 24th October**) hosted by Reporoa Primary School.

**ROTORUA BOYS' HIGH SCHOOL - Established 1914**

*Ad Astra Per Aspera*

*Whāia Te Iti Kahurangi*

**Pukuatua Street, Rotorua 3010, New Zealand**



**Phone: +64 7 348 6169**



**Website: <https://rbhs.school.nz>**

**Open Evening - 29th July**

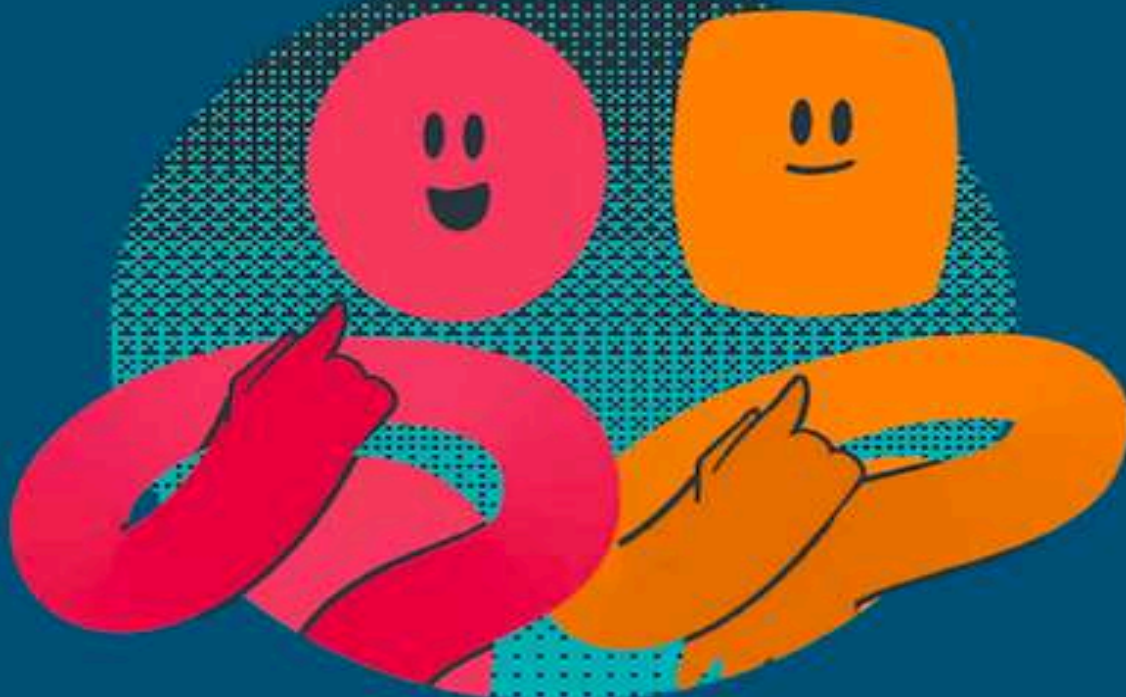
**Open Day for all contributing schools - Thursday 15th of August.**

**Orientation Day - Wednesday 5th of November.**



**RAUKURA**

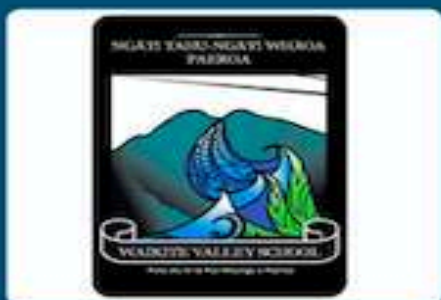




# Get on board!

Nominate yourself or someone you know  
to be a school board member.

Kelly Curtis- C% 1090 Waikite Valley Road, RD 1  
Rotorua 3077 or [Office@waikitevalley.school.nz](mailto:Office@waikitevalley.school.nz)



  
SCHOOL BOARD  
ELECTIONS

Waikite Valley School Board of Trustees election will be run this term . Five parent representatives are required. The Electoral role is available at the school office and nomination forms will be emailed to parents/caregivers on Friday 18th July. Forms are also available from the school office. If you have any questions please contact Kelly Curtis (Returning Officer) at the school office, ph 0211456420 or email [office@waikitevalley.school.nz](mailto:office@waikitevalley.school.nz).

**Key Dates:**      **Nomination forms available**  
                         **Nominations close (12pm)**  
                         **Election Day**

**Fri 18th July**  
**Wed 6th August**  
**Wed 10th September**

**DRY DOUGLAS FIR**

# **FIREWOOD**



**GET YOUR ORDERS IN NOW FOR NEXT YEAR**

**\$100 / CUBE DELIVERED**

CALL / TXT DENISE 021 0271 2476

**ALL PROCEEDS GOING TOWARDS OUR NEW  
PLAYGROUND AT WAIKITE VALLEY SCHOOL**





## Term 3 , Week 2 Values Assembly

RESPECT  
OTHERS



Pod 1 - Keira Vuletic & Theo Nearle



Rm 2 - Titoko Marshall - White & Emily Klein



Rm 3 - Lekaysha Whare - Collier &  
Loyalty - Grace Gardiner



Rm 4 - Promise - Reign Gardiner &  
Valentina Van Twuiver

## Principal's Award



Tessa Morrissey





# IDEAS OPEN FOR RURAL COMMUNITY FUNDING!



**THE ROTORUA RURAL COMMUNITY BOARD HAS FUNDING  
AVAILABLE TO IMPROVE PUBLIC FACILITIES IN RURAL AREAS.**

**Got an idea about something that could benefit  
your community? It needs to be ...**

- ▶ In a rural area within the Rotorua District
- ▶ Free and open to all members of the community
- ▶ Improving a council-owned asset (eg reserve, playground, council building, local road)

Anyone from our local rural communities can put forward ideas about how the funding could be spent. Submission for ideas is open from 4 July – 4 August 2025.



Visit [rotorualakescouncil.nz/FundingIdeas](https://rotorualakescouncil.nz/FundingIdeas) to submit your ideas or for more information.

Any questions? Email [RLC.Governance@rotorualc.nz](mailto:RLC.Governance@rotorualc.nz)

**ROTORUA  
LAKES COUNCIL**  
Te Kaitiaki o ngā Roto o Rotorua

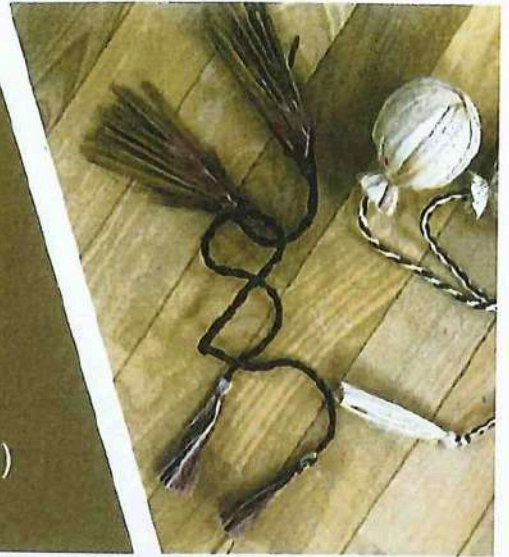


# REPOROA

## Beginners Te Reo Māori

*with Grant Hohepa*

**Date:** Tuesdays from 29 July (8 weeks)  
**Time:** 5.00pm - 7.00pm  
**Venue:** Reporoa College Whare  
**Cost:** FREE for all 8 lessons  
**Age:** 16+ (under 16s welcome with whanau )



## Join us and learn:

- Correct pronunciation
- Waiata, Pepeha, Karakia, Tikanga
- Basic Sentence structure and more...

*"Whaowhia te kete o mātauranga"*  
*Fill the basket of knowledge*



## Come and Have a Go!

## Nau mai Haere mai!

Experience a friendly and engaging tutor in a relaxed environment



SCAN HERE



**Phone:** 07 378 8109

**Email:**

**ako@reapcentralplateau.nz**

**Website:**

**www.reapcentralplateau.nz**





PLEASE SUPPORT THE BUSINESSES THAT SUPPORT US



**RICOH**  
imagine. change.



PH 027 229 4656



100% MADE OF NEW ZEALAND

