



DEVELOPING LEARNERS FOR LIFE

12TH NOVEMBER 2024

Waikite Valley School

1090 Waikite Valley Road, RD 1, Rotorua 3077 Tel 021 294 9633

www.waikitevalley.school.nz office@waikitevalley.school.nz

We are: Confident, Optimistic, Unique, Respectful, Adventurous, have Grit, Enthusiastic

KIA ORA and WELCOME TO WEEK 5

THIS WEEK:

- 12 Mayoral Visit
Book Fair arrives- see times below
- 13 Yr 7 & 8 technology
- 15 Student Leader Cluster Conference yr 5-8



Waikite Valley School Athletics Monday 18 starting at 9:10am

2025 Class Teachers

We are pleased to welcome Sheena Searle to our teaching staff for 2025. The confirmed class teachers are:

- Pod 1- Mrs Dinning
- Room 2 Whaea Shandy (Mrs Burns)
- Room 3 Whaea Sheena (Mrs Searle)
- Room 4 Mrs Hunter (4 days) Mrs Pearson (1 day)

For students moving on please let myself or Mrs Hunter know ASAP so we can finalise classes.

Kind regards

Sue Ratcliffe (Principal)



Tena koutou katoa, ko Whaea Sheena ahau.

I have been teaching for 25 years and I am excited to join the team at Waikite Valley School. I am originally from the UK and moved to Rotorua in 2002 and then to Ngakuru in 2019.

I live on a lifestyle block with my partner and teenage children, as well as an ever increasing variety and number of animals!

I am grateful to live here in Aotearoa, as it is such an amazing paradise.

My particular passions in teaching are Literacy, Te ao Māori and student led hands on learning. I believe in creating an environment in which each child feels confident to discover their world and realise their potential.

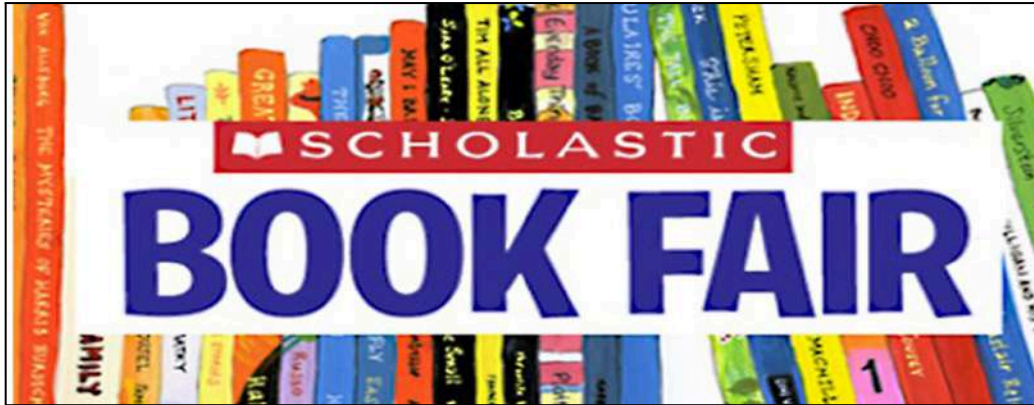
I am really looking forward to getting to know your awesome community

and to working in partnership with whānau to meet the needs of our tamariki.

Ngā mihi

Whaea Sheena

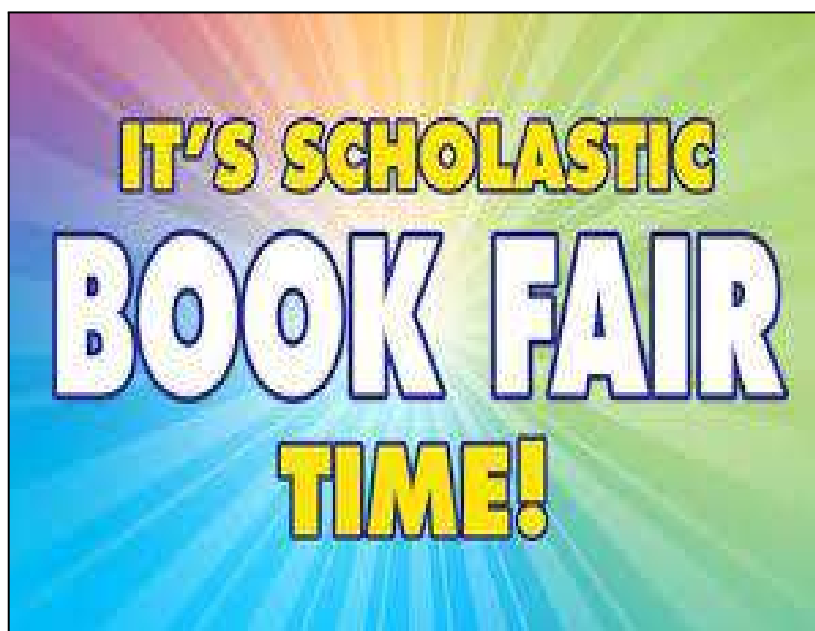
Waikite Valley School - Scholastic Book Fair



Waikite Valley School will be hosting the **Scholastic Book fair** from Wednesday the 13 November until Friday 15 November.

The Book Fair will be held in the school library from 8.30am-9am and 2.30pm to 3:30pm. (Approx times)

All parents/caregivers are welcome to attend. Payment options are cash or eftpos.





This term we want to raise student attendance!!

Regular attendance at school helps build and maintain a child's learning and positive daily habits and routines, as well as promoting their wellbeing by connecting them to their peers and learning new things.

ATTENDANCE INFORMATION

Regular attendance is defined as 90% attendance during the term- the equivalent of missing less than five days of school in a standard 10-week term.

The government has set a (regular attendance) target of 80% of students to be present for more than 90% of the term by 2030

If a student misses one day of school every two weeks, they miss more than a whole year of school by 16 years of age. As a parent or caregiver, you, alongside our school, play a key role in building strong habits of regular school attendance.

All students are legally required to attend school every day and it is a shared responsibility to make sure students attend and engage in learning from when they first start school.

Reminder: Please let the school know if your child is going to be absent or intends to be absent for a portion of the school term for whatever reason, like a tangi or medical procedure. Family holidays or taking time off for extracurricular activities (not organised by school) are not acceptable reasons for being absent.

ATTENDANCE MATTERS AND WE CAN ALL WORK TOGETHER TO INCREASE SCHOOL ATTENDANCE

TERM 4

November

- 12 Mayoral Visit
Book Fair arrives
- 13 Yr 7 & 8 technology
- 15 Student Leader Cluster Conference yr 5-8
- 18 WVS athletics
- 20 Yr 7 & 8 technology
- 21 Reporoa Cluster Maths Competition
- 25 WVS athletics (PP date)
- 28 Cluster athletics-Reporoa College

December

- 9 Reports out
House Tabloids
- 11 Prize Giving followed by afternoon tea
(Details to follow)
- 13 End of Year

2025 TERM 1 START DATE is TUESDAY 28 JANUARY

SCHOOL HAT REMINDER

In Term 4, it is compulsory for the students to wear a school hat when they are outside the classroom. We have school hats for sale in the office (\$22) Any students not wearing a school hat will be asked to sit or play in the shade (under the large shade sail in the courtyard or the sandpit).

CONTACT: *Kelly Curtis* mob: 021 294 9633
office@waikitevalley.school.nz.

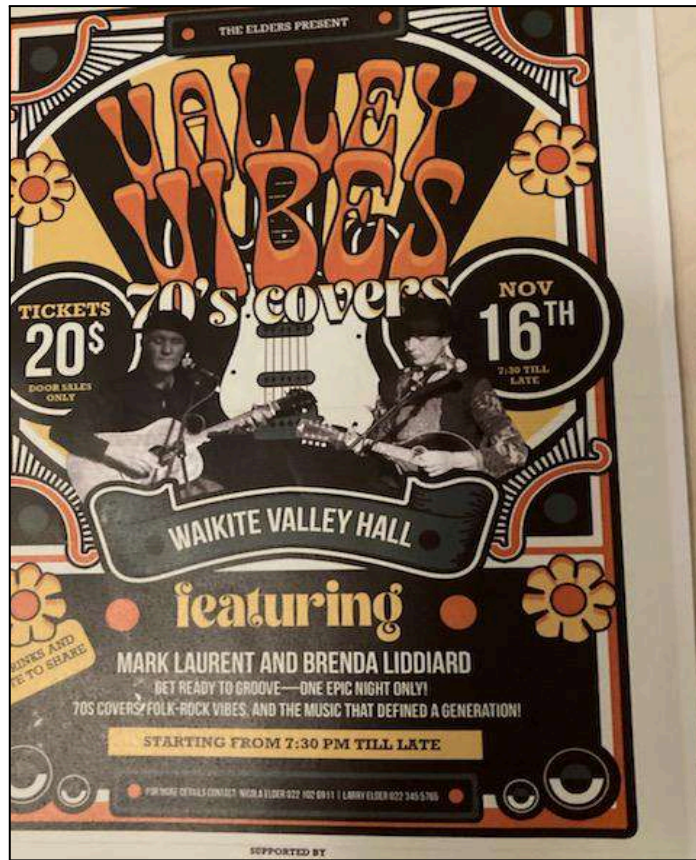
THANK YOU FOR YOUR ONGOING SUPPORT WITH KEEPING OUR TAMARIKI SAFE.

SUE RATCLIFFE
PRINCIPAL



WAIKITE VALLEY SCHOOL LUNCH PRICE LIST - Price increase

Mince & Mince & Cheese Pies	\$3.50
Sausage Rolls	\$3.00
Juicies	\$1.00
Moosies	\$1.50



VALUES AWARDS - TERM 4, WEEK 5



Grit

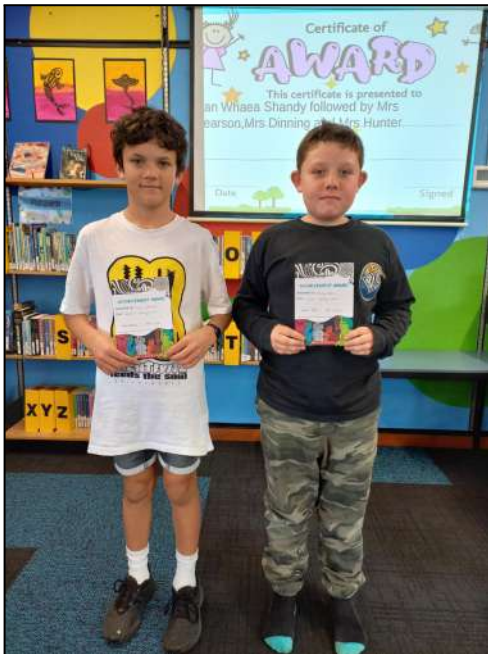
Unique

COURAGE



Pod 1 - Elsie Waterworth & Jackson Warren

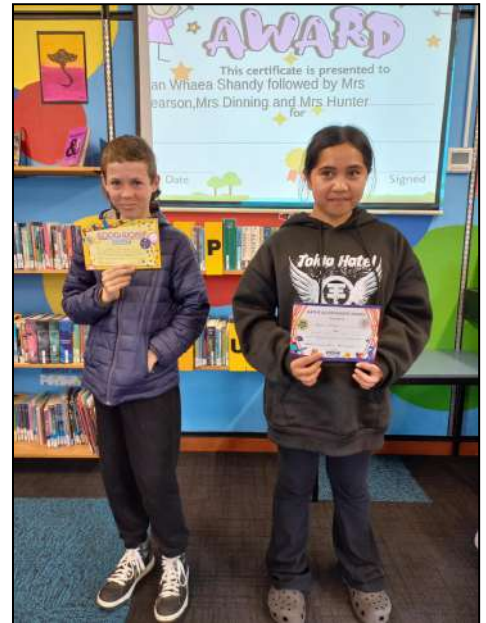
Rm 2 - Ayla Roche (absent) & Ollie Lischner



Adventures

Stay Optimistic

Rm 4 - Louie Atkinson & George Coker



Rm 4 - Cooper Morrissey & Rylee Hohepa

CONFIDENCE



Optimistic

Principal's Award - Lexi Fear

Join us for our

OPEN DAY

at BestStart Waikite Valley Kindy!

Tuesday 26th November

9:00am – 11:00am

PLEASE SUPPORT THE BUSINESSES THAT SUPPORT US.



GR8VANS
BUILDING LTD
PH 027 630 8245



CENTRAL
DRAINAGE & EARTHWORKS
Watson Elliston
Registered Drainlayer
MOBILE: 021 938 956
EMAIL: watson@centraldrainage.co.nz

DRAINAGE
Residential/Subdivisional
Septic & Bio Cycle Tanks
EARTHWORKS
All farm work:
- Races & Driveways
- Site Excavation
- Effluent Ponds
- Tree Removal
2.5 and 12 TON DIGGERS



FOUNDATION



BLUFF COUNTRY
CONTRACTORS

RICOH
imagine. change.



FARM SOURCE
Fonterra
Dairy for life



WAIKITE VALLEY
THERMAL POOLS
Springs'n'Spa



CAROLYN MORRIS
M +64 21 292 2891
carolyn.morris@nzsir.com
New Zealand | Sotheby's
INTERNATIONAL REALTY

grassroots
trust



SILVER FERN FARMS

100% MADE OF NEW ZEALAND



NZCT
NZ COMMUNITY TRUST

RDO FENCING
FOR ALL YOUR FENCING NEEDS



PH 027 229 4656

countdown




Farmlands



Shane Atkinson
BUILDERS
COMMERCIAL and RESIDENTIAL
021 222 9993
sa.builders@outlook.com

ASB
ONE STEP > AHEAD



ANIMAL HEALTH SERVICES