



Waikite Valley School

Developing Learners for Life

1090 Waikite Valley Road, RD 1, Rotorua 3077 Tel 021 294 9633
facebook: <https://www.facebook.com/WAIKITEVALLEYSCHOOL/>



Weekly Panui - Monday 23th March, 2020

Kia ora Whanau

Thank you all kindly for your understanding during these uncertain times. It was awesome to hold our annual camp last week and the feedback I have received from students, staff and whanau who attended was that it was an excellent adventure for all involved! Ka mau te wehi!

This week is another adventure - of an entirely different sort. The prime minister just made an urgent and major announcement regarding our response status. New Zealand has escalated to stage 3 immediately; moving into stage 4 in 48 hours. For full ramifications, please visit [covid19.govt.nz](https://www.covid19.govt.nz). Waikite Valley School will be closed following after school care today for at least two weeks. Tomorrow, children of essential workers are permitted at school and will be supervised by myself (Teresa Topp). I will be sending you information (on Facebook page and website) tomorrow regarding the students learning for the next couple of weeks. My strongest message to you all is to be very weary and critical of information you see or receive via social media. Please rely on & trust the information that is published through reliable sources - particularly the clear guidance we are being given by the government at this time. Unity, calmness and being responsible for our own actions are key. If you are feeling very anxious or stressed about any scenario, please talk to family or friends. For support with grief, anxiety, distress or mental wellbeing, you can also call or text the 'Need to talk?' service on 1737. This service is free, available 24 hours a day, 7 days a week and gives you the chance to talk it through with a trained counsellor.

Let's model our school values of optimism and grit -
He waka eke noa!

Teresa Topp (Principal)

Waikite Valley School - Developing Learners for Life
E: principal@waikitevalley.school.nz
M: 027 634 4744 School Ph: 021294 9633

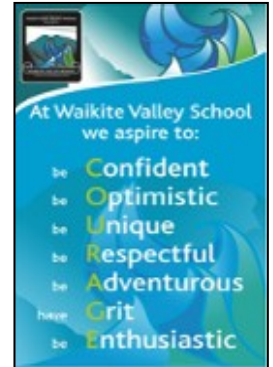


WVS PTA Fundraiser

The PTA are selling environmentally friendly honey wraps, stainless steel straws, produce bags & bulk bin bags. Please get behind this excellent fundraiser. A flyer including more information and an order form is attached to this newsletter.



FOR A SWEETER FUTURE
www.honeywrap.co.nz



IMPORTANT DATES

Wednesday 25th March

- ★ PTA Annual General Meeting - Waikite Valley Hall , *Wine & Cheese Social* 7.00pm **POSTPONED**

TUESDAY 31 MARCH

- ★ Waikite Valley School Board of Trustees meeting at 6.30pm **TBC**

WEDNESDAY 1 APRIL

- ★ **\$100 Countdown Voucher** draw for those families who have paid their 2020 school fees (including camp).

Thursday 9th April

- ★ **Last day Term 1 (school finishes at 3pm)**

Friday 10th April

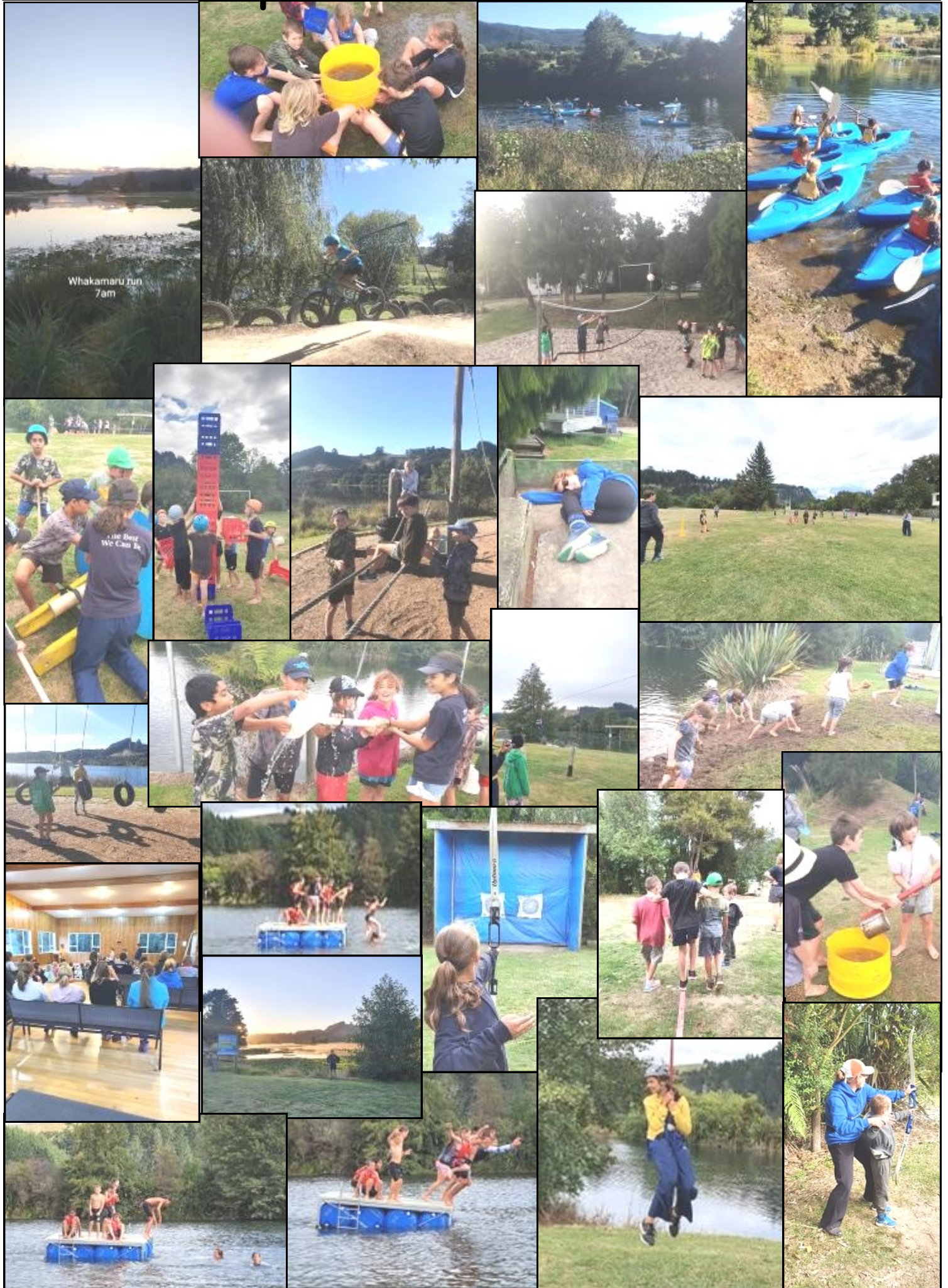
- ★ **Good Friday - Public Holiday**

Monday 27th April

- ★ **Observed ANZAC day Public Holiday**

"Developing learners for life"

Camp Whakamaru 2020





Camp Whakamaru 2020

Celebrating Success!



Pod 1's day at Camp.

Design at its best. Ashley designed and made her Elsa dress independently

Sports Notice Board

Results

Fixtures

Dates

Information

Reporoa Junior Rugby

If you missed the Junior muster it is not too late to register for the 2020 season.

There is a current postponement with starting of the season due to Covid 19, hopefully this will not impact on the commencement of games as they are not due to start till May 2. If you are wanting more information about signing up for Junior Rugby or what is involved, look up our Facebook page 'Reporoa Rugby Football Club' or phone Norm on 0274488887



PTA AGM Wine and Cheese

Social

Please put aside the date -
Wed 25th March to attend our
**Parents & Teachers
Association Annual General
Meeting and School
Community
Social.**

This is a chance to
meet other school
whanau and build
momentum for a
great year!



Supporting success in your school

If you're a parent, staff member or a member of the school community and draw down a new ASB home loan of \$250,000 or more, ASB will donate \$500 to your chosen participating school.



How it works

Mention this school donation offer when you apply for a new ASB home loan. The supporting success in your school promotion is only available when you apply for a new home loan through an ASB branch, Mobile Lending Manager or by calling us on 0800 100 600. Excludes broker lending and is limited to one donation per customer.

Your new home loan application must be received, approved and then documented in a facility agreement before 30 June 2020. This home loan offer is only available on loans secured by an owner-occupied residential property provided to ASB, with a minimum of 20% equity.

Once your home loan is fully drawn down, ASB will donate \$500 to your chosen participating school.

Promotion ends 30 June 2020. Fees may apply. ASB's lending criteria and terms apply.

LIST YOUR HOME WITH ME AND I'LL
DONATE \$500 TO WAIKITE VALLEY SCHOOL

New Zealand

Sotheby's
INTERNATIONAL REALTY

Carolyn
Morris

