



# Waikite Valley School

*Developing Learners for Life*

1090 Waikite Valley Road, RD 1, Rotorua 3077 Tel 021 294 9633  
facebook: <https://www.facebook.com/WAIKITEVALLEYSCHOOL/>



## Weekly Panui - Monday 16th March, 2020

### Kia ora Whanau

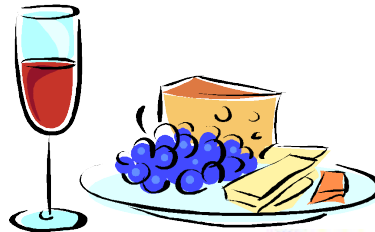
#### School Camp

We're all set! The staff and students spent all morning doing their last minute preparation and organisation. Please have all the kids, with all their gear ready to go, at school by 9.30am. If they are getting their gear transported by another vehicle please leave it on the astro - turf (unless raining). Packets of biscuits can be dropped at the office (not in camp bags please).



#### PTA AGM Wine and Cheese Social

Please put aside the date - **Wed 25th March** to attend our **Parents & Teachers**



**Association Annual General Meeting and School Community Social.**

Let's fill the hall! This is a chance to meet other school whanau and build momentum for a great year!

**Teresa Topp (Principal)**

**Waikite Valley School - Developing Learners for Life**

E: [principal@waikitevalley.school.nz](mailto:principal@waikitevalley.school.nz)

M: 027 634 4744 School Ph: 021 294 9633



# WANTED

## After School Care Supervisor

A very responsible, confident, well-organised and reliable person is required to run our After School Care. The remuneration is around \$21 per hour, with the hours of 2.45-5.15pm, Mon-Fri (Term time only). There is always a teacher on-site to assist you if needed. Please contact Mrs Topp if you are interested!



### IMPORTANT DATES



#### **TUESDAY 17 MARCH - FRIDAY 20 MARCH**



- ★ **SCHOOL CAMP AT MICAMP WHAKAMARU (POD 2, ROOM 4 & GPA)**

#### **Wednesday 25th March**

- ★ Room 4 Sharing Assembly (2.15pm)
- ★ PTA Annual General Meeting - Waikite Valley Hall, **Wine & Cheese Social**

#### **TUESDAY 31 MARCH**

- ★ Waikite Valley School Board of Trustees meeting at 6.30pm

#### **WEDNESDAY 1 APRIL**

- ★ \$100 Countdown Voucher draw for those families who have paid their 2020 school fees (including camp).

#### **THURS 2 APR-FRI 3 APRIL**

- ★ **TEACHER ONLY DAYS**

#### **Wednesday 8th April**

- ★ GPA Sharing Assembly (2.15pm)

#### **Thursday 9th April**

- ★ **Last day Term 1 (school finishes at 3pm)**

#### **Friday 10th April**

- ★ **Good Friday - Public Holiday**

#### **Monday 27th April**

- ★ **Observed ANZAC day Public Holiday**

#### **Tuesday 28th April**

- ★ **First day Term 2**

## "Developing learners for life"



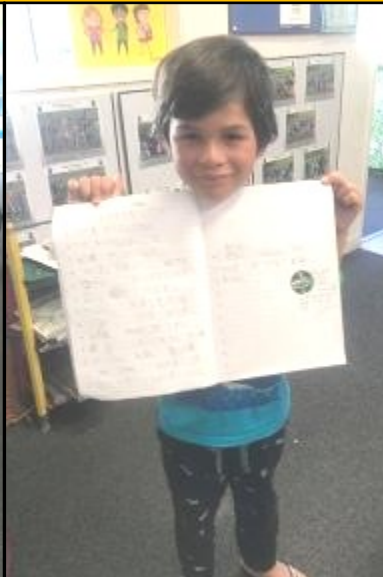


# Rats Duathlon 2020





# Celebrating Success!



Pod 2's Sharing Assembly



Principal's Awards for  
Sophie Johnson, Pod 1 and Sheldon  
Foster, Pod 2.



Drew's outdoor  
furniture



Courtney's  
six-pack  
construction



Room 4 shared  
their home  
learning and  
Pod 1 made toast  
with  
toppings





# Sports Notice Board

Results

Fixtures

Dates

Information

## Term 2 Sports Organisation

### **Miniball**

If anyone is keen to coach a mini ball team in Term 2, please let Mrs Pearson or Mrs Hunter know by March 20. Teams are 5 aside and range from year 0 to year 8. All games are after school at the Sportsdrome in Rotorua on a Monday, Wednesday or a Friday, depending on the year level. We will look at forming the teams once we know if we have any coaches.

### **Rippa Rugby**

We will also be looking for Rippa Rugby coaches in Term 2. We will be entering a year 3-4 team and a year 5-6 team in the annual tournament in June. The tournament is a one day, mid-week event. We will hold practices during school, at times that suit the coaches. Let Mrs Pearson or Mrs Hunter know if you are keen to be involved.

## Supporting success in your school

If you're a parent, staff member or a member of the school community and draw down new ASB home loan of \$250,000 or more, ASB will donate \$500 to your chosen participating school.



### How it works

Mention this school donation offer when you apply for a new ASB home loan. The supporting success in your school promotion is only available when you apply for a new home loan through an ASB branch, Mobile Lending Manager or by calling us on 0800 100 600. Excludes broker lending and is limited to one donation per customer.

Your new home loan application must be received, approved and then documented in a facility agreement before 30 June 2020. This home loan offer is only available on loans secured by an owner-occupied residential property provided to ASB, with a minimum of 20% equity.

Once your home loan is fully drawn down, ASB will donate \$500 to your chosen participating school.

Promotion ends 30 June 2020. Fees may apply. ASB's lending criteria and terms apply.

A big thanks to

Jacob Gielen and Alice Kissick who got school a \$500 donation from ASB when they took out their home loan.

If you are in the process of taking out a home loan with ASB please consider supporting our school.

### **Community Kindy** **Waikite Valley**



**FREE Play and Stay every Friday, 9.30am-11am**, for morning tea and coffee.

This is a great way to meet new and local families in area. Everyone welcome!

- \* Teachers from the local community
- \* Catering for children aged 2 - 5 years old
- \* Morning and afternoon teas provided
- \* Fun and friendship for children



**OPEN: 7.30am-5.30pm Mon-Fri**

**Get in touch Phone: (07) 562 4623**  
**Email: [ck.waikite.manager@best-start.org](mailto:ck.waikite.manager@best-start.org)**